

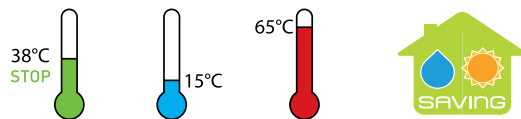
DANIEL
RUBINETTERIE
MILANO



Q-FACTOR



Q-FACTOR



L'utilizzo dei modelli termostatici può aiutare ad avere un maggiore controllo sul consumo di acqua e energia, risparmiando la quantità di acqua solitamente sprecata cercando la temperatura desiderata.

The use of thermostatic models can help you to have more control over the energy and water consumption, saving the amount of water usually wasted looking for the desired temperature.

FINISHINGS

CP cromo spazzolato
brushed chrome

64 vecchio rame
old copper

DO oro lucido
shiny gold

GO grafite
graphite

PG oro rosa lucido
shiny pink gold

NP nichel spazzolato
brushed nickel

14 bianco opaco
matt white

DP oro spazzolato
brushed gold

PP oro rosa spazzolato
brushed pink gold

FIN 2

NPO nichel spazzolato opaco
matt brushed nickel

15 nero opaco
matt black

FZ cromo nero spazzolato lucido
shiny brushed black chrome

RPO rame anodizzato
anodised copper

63 vecchio ottone
old brass

OIL oil bronze
oil bronze

FIN 4

CF cromo nero lucido
shiny black chrome

RL rame lucido
shiny copper

FIN 5

Finiture consigliate per questa collezione.

Suggested finishes for this collection.



CARATTERISTICHE TECNICHE:

La serie è dotata di cartuccia termostatica prodotta da S.T.S.R. Studio Tecnico Sviluppo e Ricerche - www.stsr.it

TECHNICAL CHARACTERISTICS:

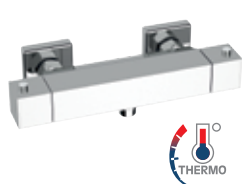
The series is equipped with thermostatic cartridge, produced by S.T.S.R. Research Development Technical Office - www.stsr.it



Termostatico. L'utilizzo dei modelli termostatici può aiutare ad avere un maggiore controllo sul consumo di acqua ed energia.

Thermostatic. The use of thermostatic models can help you to have more control over the energy and water consumption.

MISCELATORI DOCCIA - SHOWER MIXERS



ZT611

Miscelatore esterno doccia termostatico, forma quadrata, con attacco inferiore da 1/2", maniglie in ABS cromato.

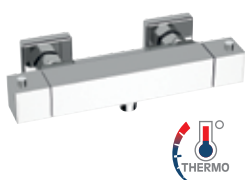
Thermostatic shower mixer, squared shape, with lower 1/2" connection, handles in chrome plated ABS.



ZT611Z

Miscelatore esterno doccia termostatico, forma quadrata, con deviatore incorporato ed attacco alto da 3/4" ed attacco inferiore da 1/2", maniglie in ABS cromato.

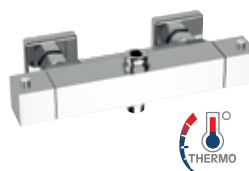
Thermostatic shower mixer, squared shape, with integrated diverter, upper 3/4" connection and lower 1/2" connection, handles in chrome plated ABS.



ZT611B

Miscelatore esterno doccia termostatico, forma quadrata, con attacco inferiore da 1/2", maniglie in ottone cromato.

Thermostatic shower mixer, squared shape, with lower 1/2" connection, handles in chrome plated brass.



ZT611ZB

Miscelatore esterno doccia termostatico, forma quadrata, con deviatore incorporato ed attacco alto da 3/4" ed attacco inferiore da 1/2", maniglie in ottone cromato.

Thermostatic shower mixer, squared shape, with integrated diverter, upper 3/4" connection and lower 1/2" connection, handles in chrome plated brass.



ZT109

Kit doccia composto da miscelatore esterno doccia termostatico ZT611 saliscendi lusso ultrapiatto in ottone cromato A354, doccetta in ABS cromata A490 e flessibile A505X 150.

Shower kit composed of thermostatic shower mixer ZT611, ultraflat deluxe sliding rail in c.p. brass A354, handshower in c.p. ABS A490 and flexible hose A505X 150.

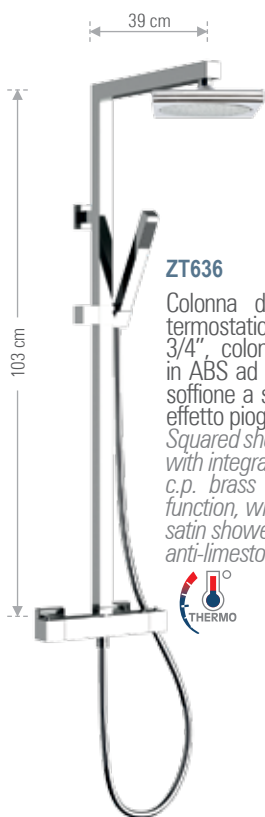


ZT109B

Kit doccia composto da miscelatore esterno doccia termostatico quadrato tipo lusso, con maniglie in ottone cromato ZT611B, saliscendi lusso ultrapiatto in ottone cromato A354, doccetta anticalcare con getti in silicone A492 e flessibile A505X 150.

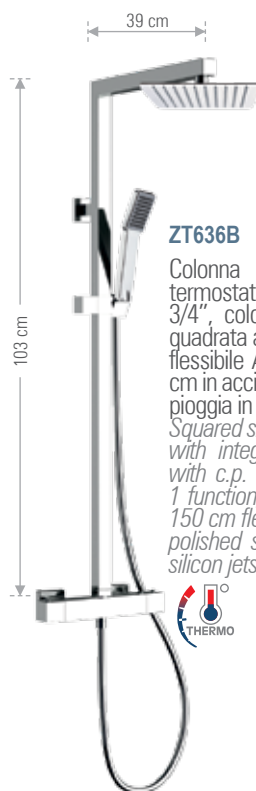
Shower kit composed of thermostatic squared shower mixer luxury type, handles in chrome plated brass ZT611B, ultraflat deluxe sliding rail in c.p. brass A492, antilimestone handshower with silicon jets 317SQ and flexible hose A505X 150.

COLONNE DOCCIA - SHOWER COLUMN

**ZT636**

Colonna doccia quadrata con miscelatore doccia termostatico con deviatore integrato, attacco alto da 3/4", colonna doccia in ottone cromato e doccetta in ABS ad 1 funzione, con flessibile A505X 150 cm e soffione a snodo, cromo-satinato 23x23 cm, con getti effetto pioggia in silicone, anticalcare.

Squared shower column with thermostatic shower mixer with integrated diverter and upper connection 3/4", with c.p. brass shower column, ABS c.p. handshower 1 function, with A505X 150 cm flexible hose and chrome-satin shower head, rain jet, 23x23 cm, with balljoint and anti-limestone silicon jets.

**ZT636B**

Colonna doccia quadrata con miscelatore doccia termostatico con deviatore integrato, attacco alto da 3/4", colonna doccia in ottone cromato e doccetta quadrata ad 1 funzione con getti in silicone, anticalcare, flessibile A505X 150 cm e soffione ultra piatto 20x20 cm in acciaio INOX lucidato a specchio, con getti effetto pioggia in silicone, anticalcare.

Squared shower column with thermostatic shower mixer with integrated diverter and upper connection 3/4", with c.p. brass shower column, squared handshower 1 function, anti-limestone with silicon jets, with A505X 150 cm flexible hose and ultra slim stainless steel mirror polished shower head 20x20 cm, with anti-limestone silicon jets.



DANIEL
RUBINETTERIE
MILANO

Daniel Rubinetterie S.p.A.
Via L. da Vinci, 53 - 20062 Cassano d'Adda - (MI) Italy
Tel.: +39 0363 62 651 - Fax: +39 0363 62 664
E-Mail: info@daniel.it - www.daniel.it